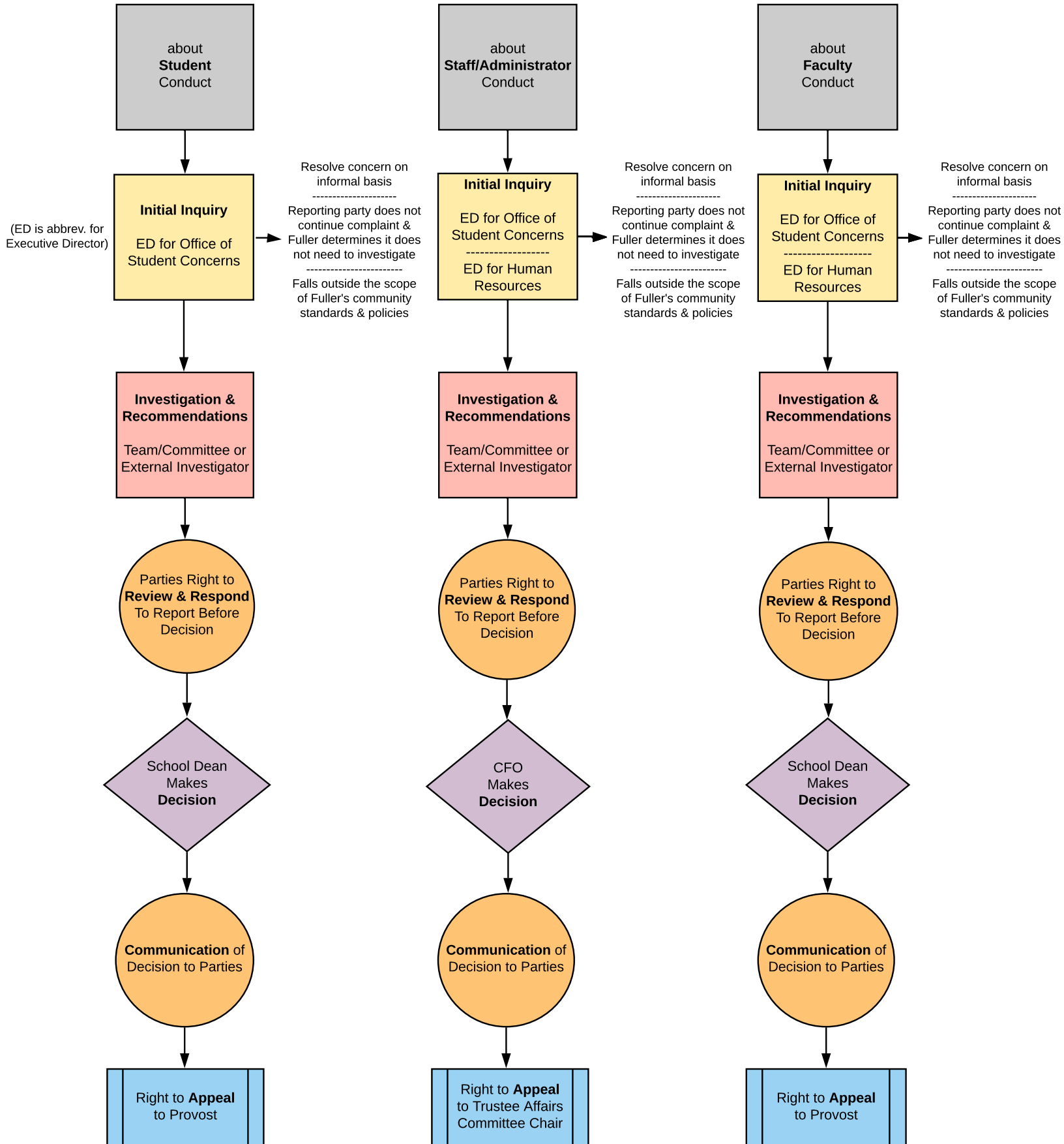


Overview of Student Complaint Resolution Process

Applies to Community Standards, Sexual Harassment, Unlawful Discrimination, Unlawful Harassment, Sexual Misconduct, Retaliation
Fuller Theological Seminary (revision date 3-29-2018)

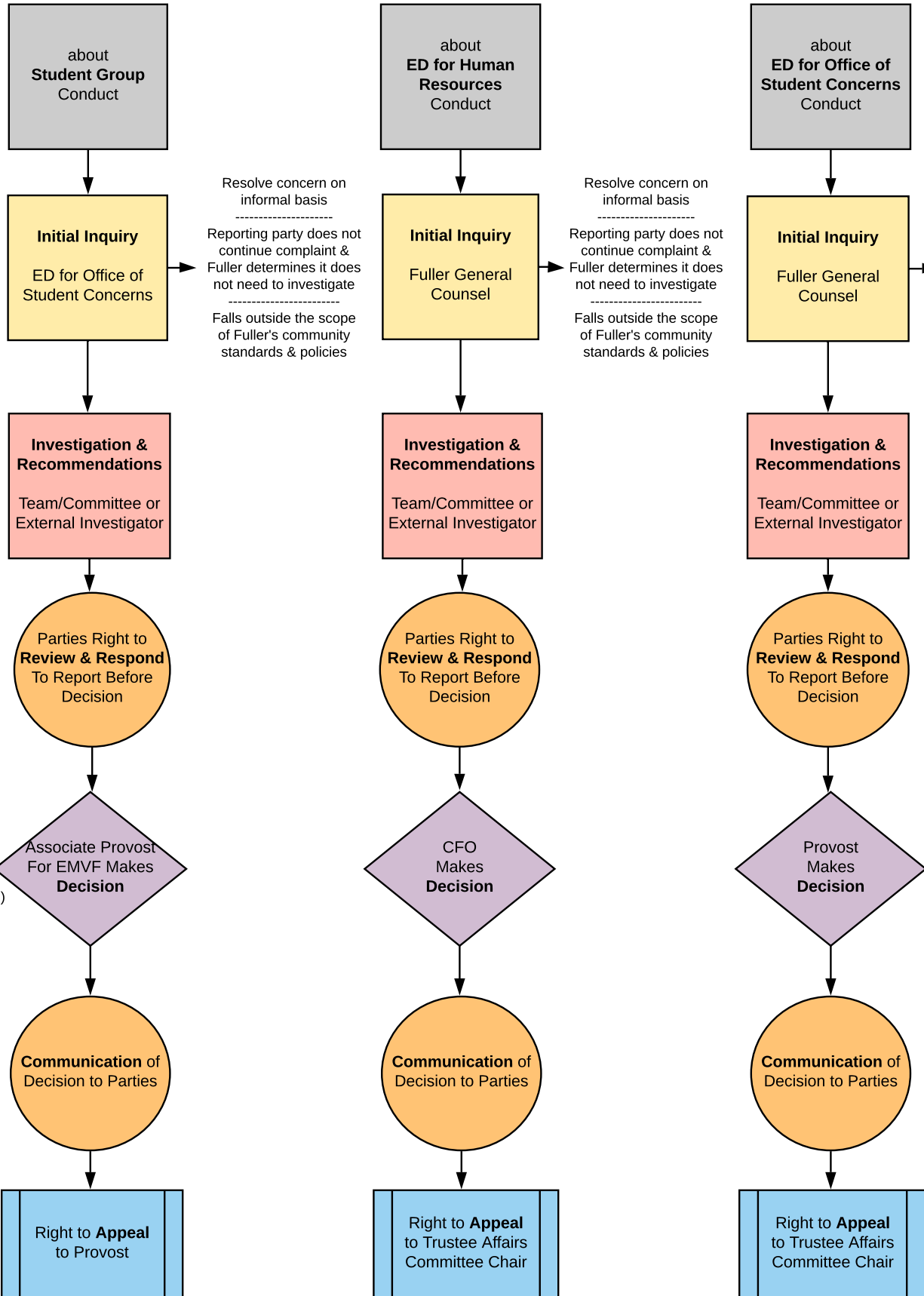
If a student has a concern...



Overview of Student Complaint Resolution Process

Applies to Community Standards, Sexual Harassment, Unlawful Discrimination, Unlawful Harassment, Sexual Misconduct, Retaliation
Fuller Theological Seminary (revision date 3-29-2018)

If a **student** has a concern...

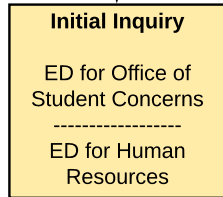
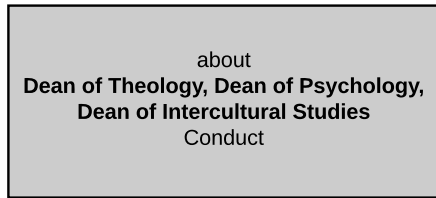


(EMVF is abbrev for Enrollment Management & Vocation Formation)

Overview of Student Complaint Resolution Process

Applies to Community Standards, Sexual Harassment, Unlawful Discrimination, Unlawful Harassment, Sexual Misconduct, Retaliation
Fuller Theological Seminary (revision date 3-29-2018)

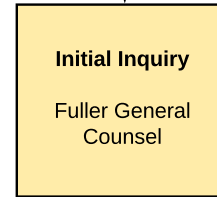
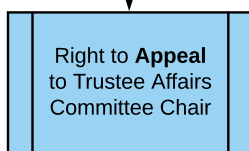
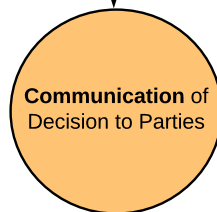
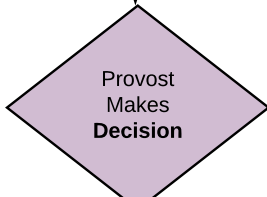
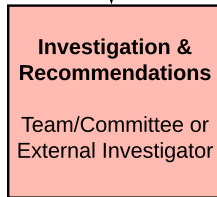
If a **student** has a concern...



Resolve concern on informal basis

Reporting party does not continue complaint & Fuller determines it does not need to investigate

Falls outside the scope of Fuller's community standards & policies



Resolve concern on informal basis

Reporting party does not continue complaint & Fuller determines it does not need to investigate

Falls outside the scope of Fuller's community standards & policies

