

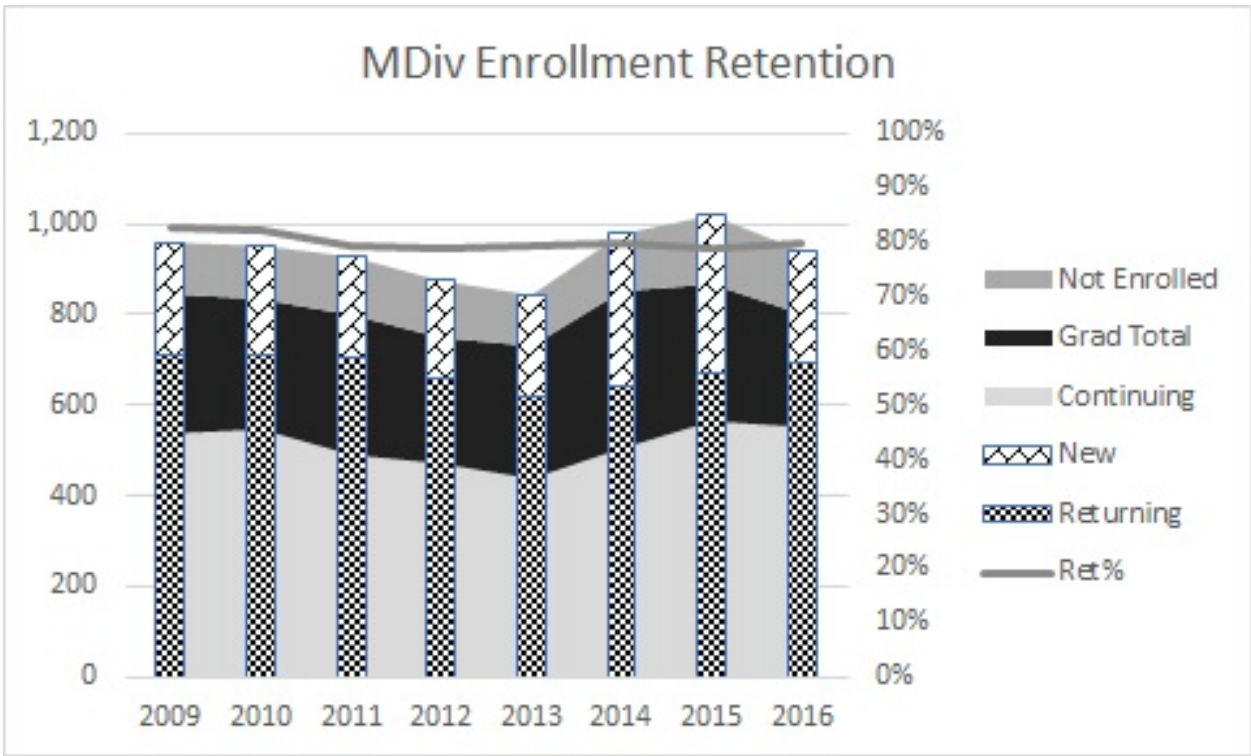
Retention and Graduation Data by School and Degree Program

<u>School of Theology</u>	2
<u>Master of Divinity (English and Spanish)</u>	2
<u>Master of Arts in Theology (English and Spanish)</u>	2
<u>Master of Arts in Theology and Ministry (English and Spanish)</u>	3
<u>Master of Theology (English)</u>	3
<u>Doctor of Ministry (English and Spanish)</u>	4
<u>Doctor of Ministry (Korean)</u>	4
<u>Doctor of Philosophy in Theology (English)</u>	5
<u>School of Intercultural Studies</u>	6
<u>Master of Arts in Intercultural Studies (English)</u>	6
<u>Master of Arts in Intercultural Studies (Korean)</u>	6
<u>Master of Arts in Global Leadership (English)</u>	7
<u>Master of Theology in Intercultural Studies (English)</u>	7
<u>Master of Theology in Intercultural Studies (Korean)</u>	8
<u>Doctor of Missiology (English)</u>	8
<u>Doctor of Missiology (Korean)</u>	9
<u>Doctor of Ministry in Global Ministries (Korean)</u>	9
<u>Doctor of Philosophy in Intercultural Studies (English)</u>	10
<u>School of Psychology</u>	11
<u>Master of Science in Marriage and Family Therapy (English)</u>	11
<u>Doctor of Psychology (English)</u>	12
<u>Doctor of Philosophy in Clinical Psychology (English)</u>	13

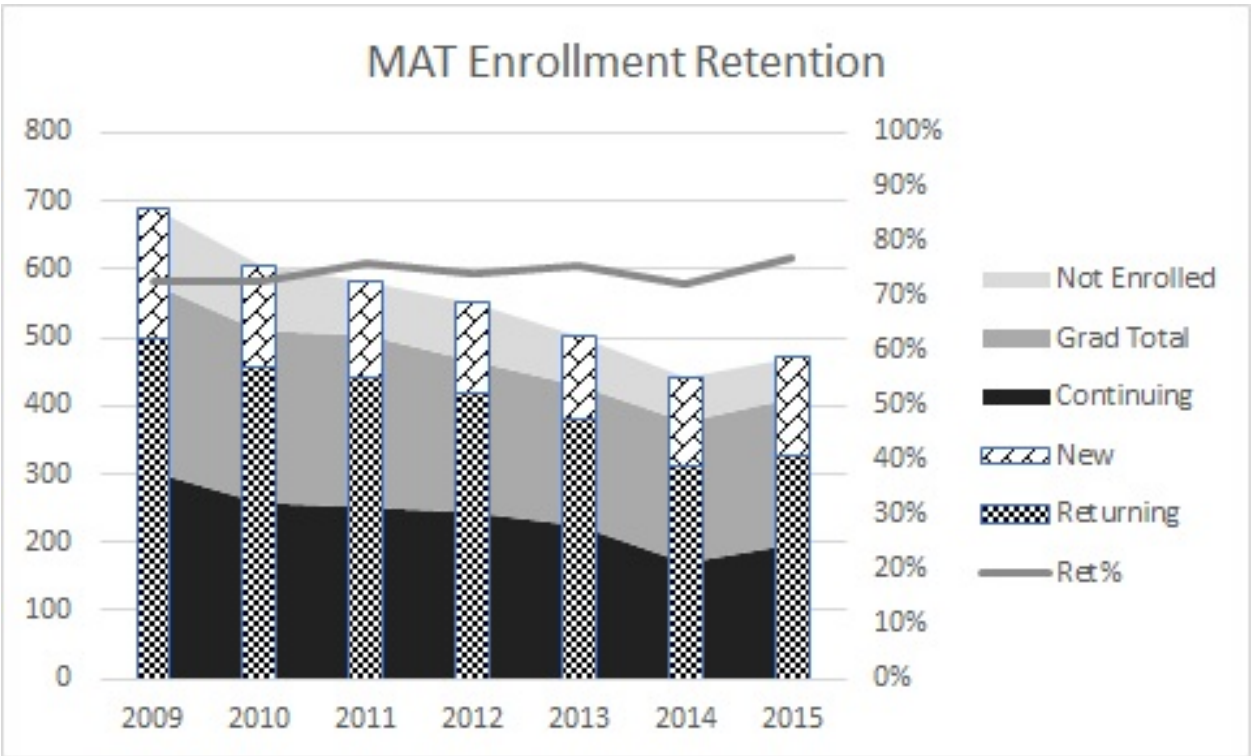
General notes. In the graphs that follow, the vertical, stacked bars represent enrollment within a given academic year, with new students represented in the top, diagonally crosshatched section of the bar and returning students represented by the lower, darker section of the bar. The stacked area graph behind the bars represents the enrollment status of those students in the following two years. The darker gray area represents students who continued in their program whereas the lighter gray area represents students who successfully completed their programs in that year or the following year. The black shaded area represents students who neither took additional classes nor graduated in the following year, and were thus moved to inactive status. All of these values are raw numbers and attached to the left Y axis. The gray line across the top is the retention rate and is interpreted using the right Y axis.

School of Theology.....

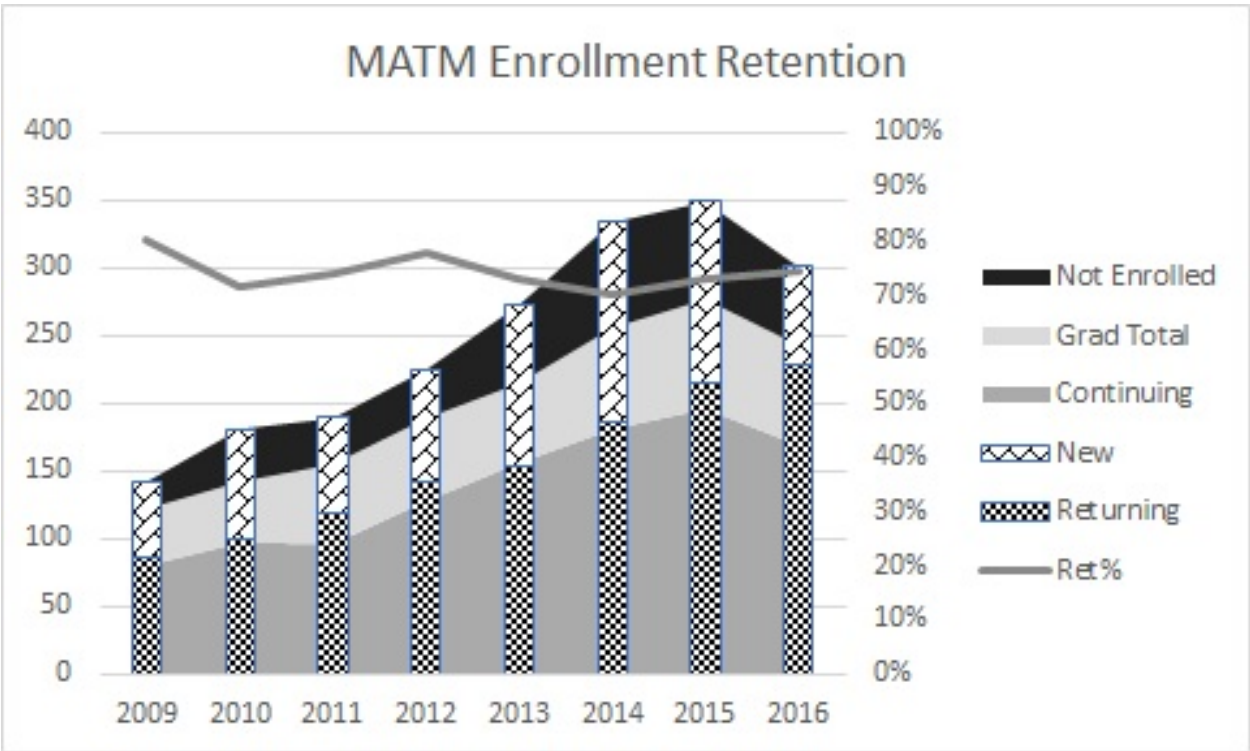
Master of Divinity (English and Spanish)



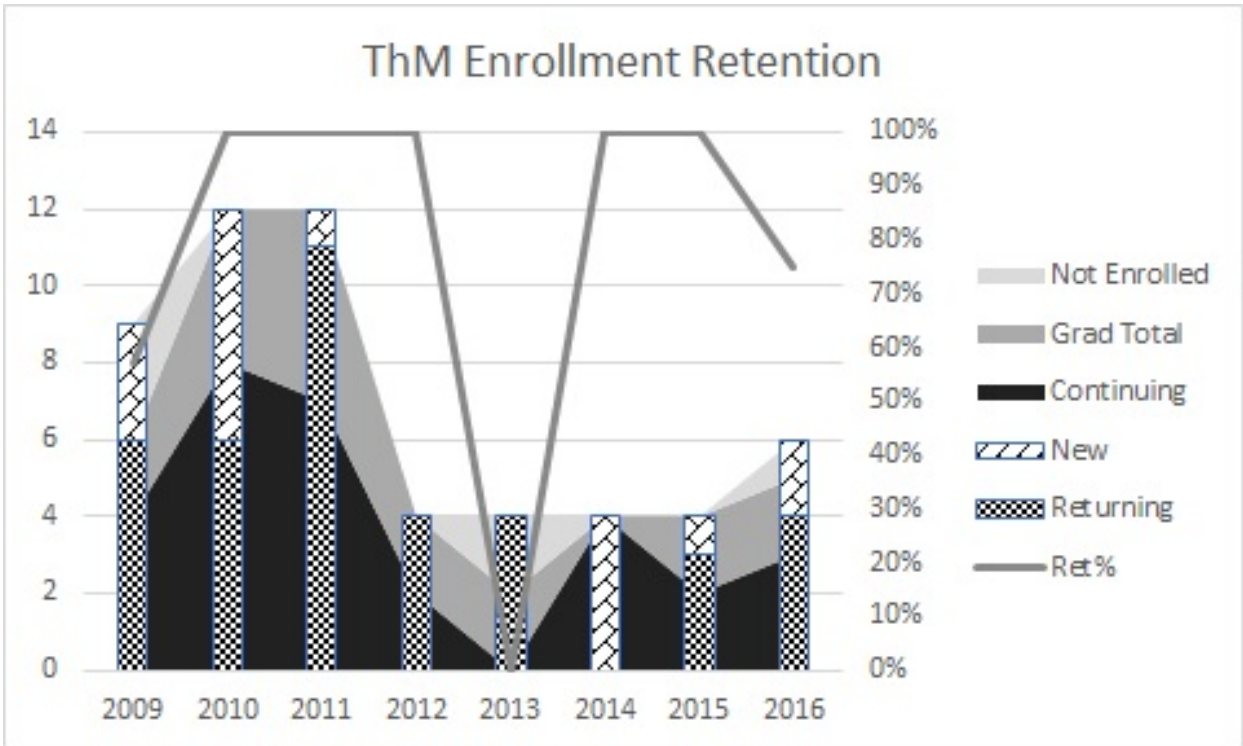
Master of Arts in Theology (English and Spanish)



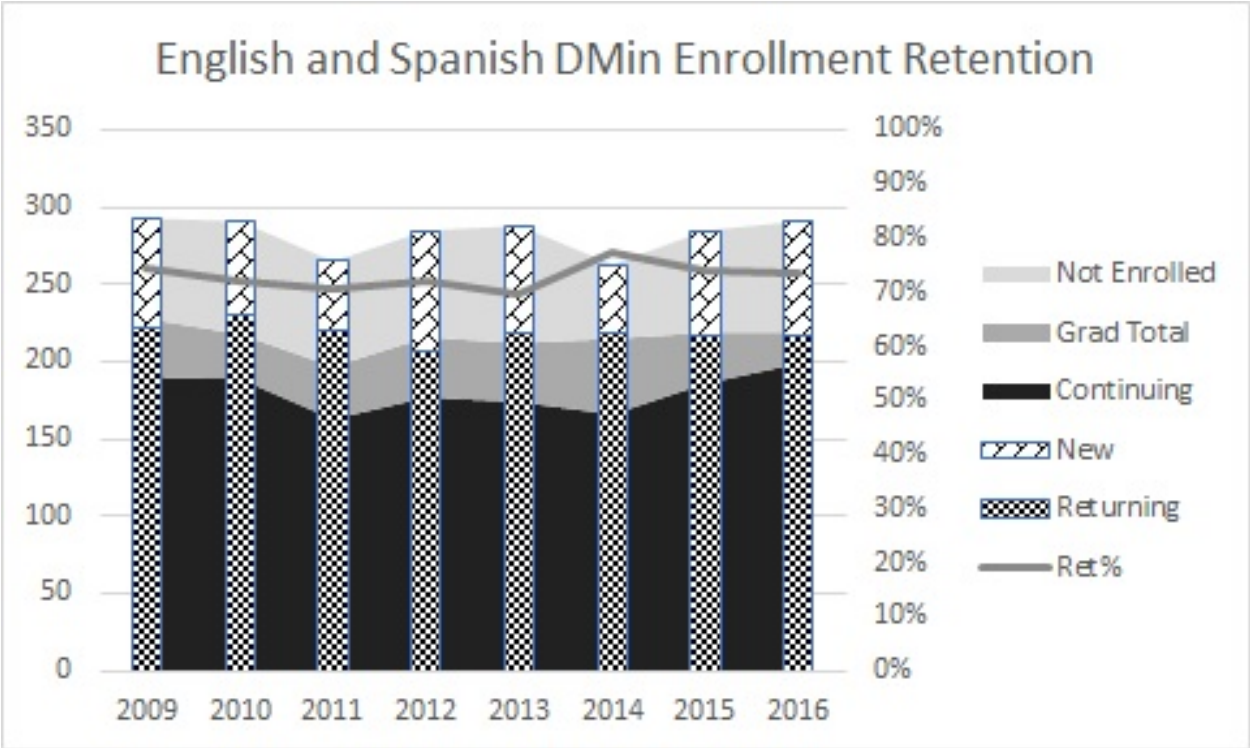
Master of Arts in Theology and Ministry (English and Spanish)



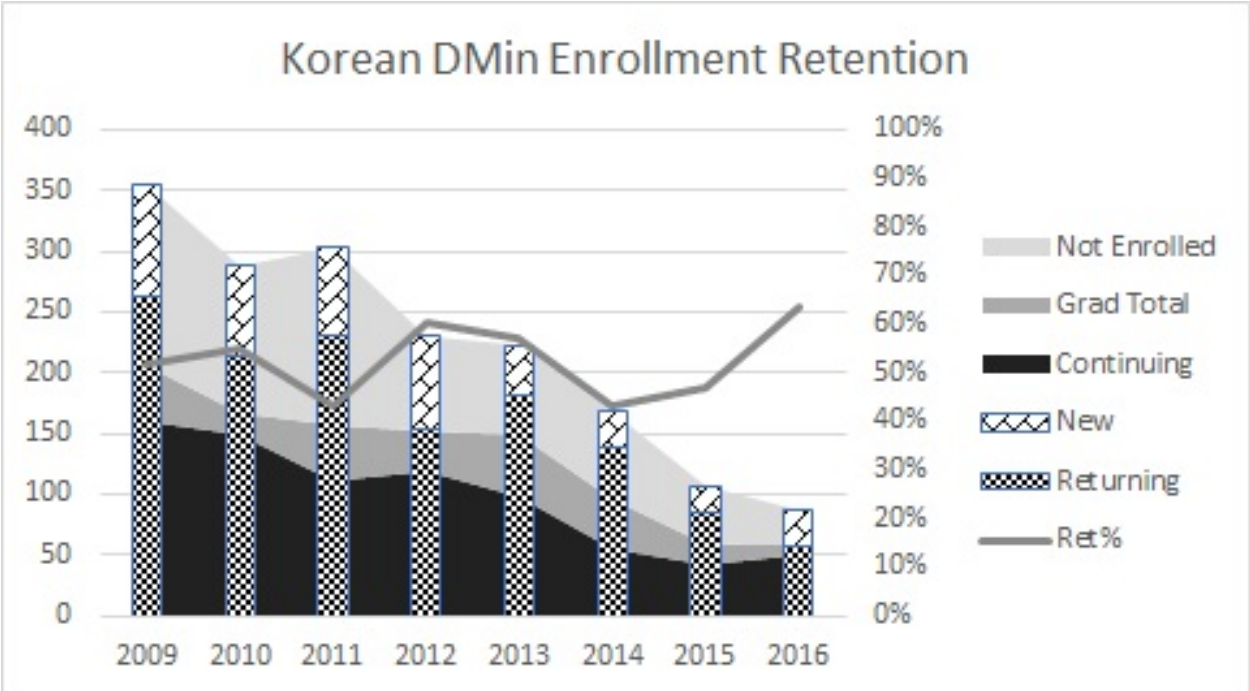
Master of Theology (English)
Doctor of Ministry (English and Spanish).

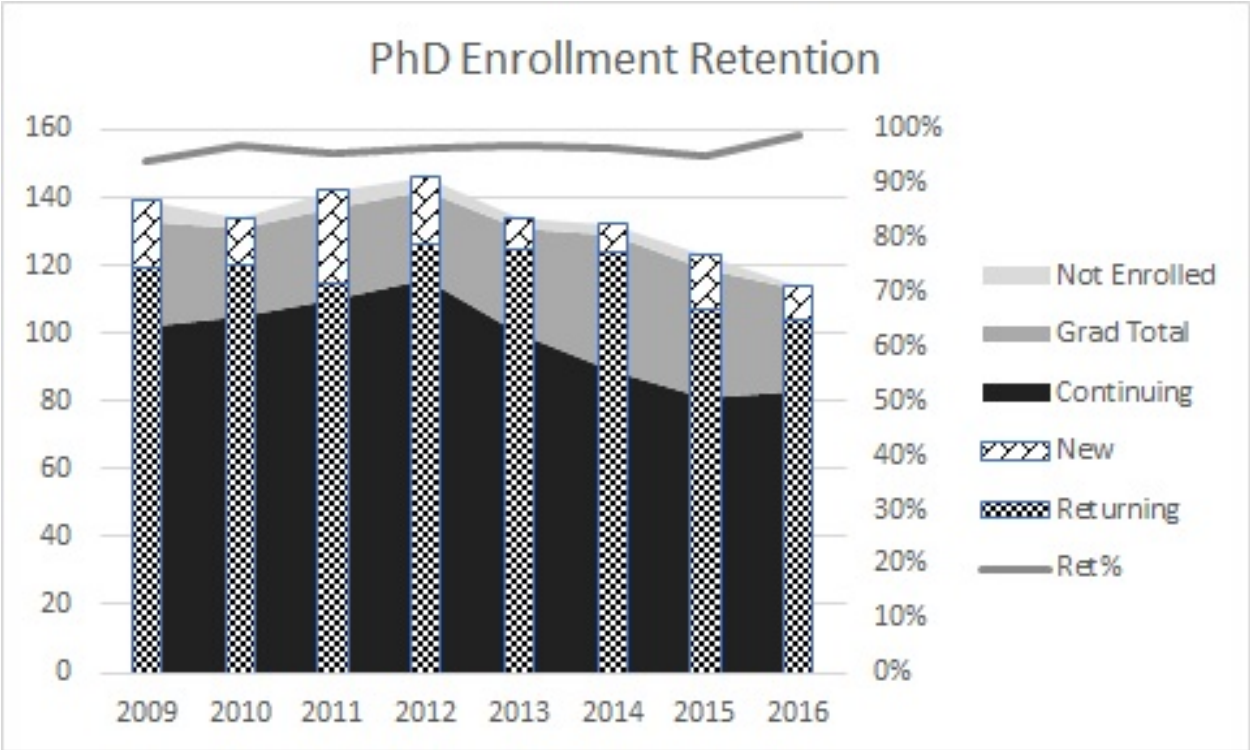


Doctor of Ministry (Korean).....

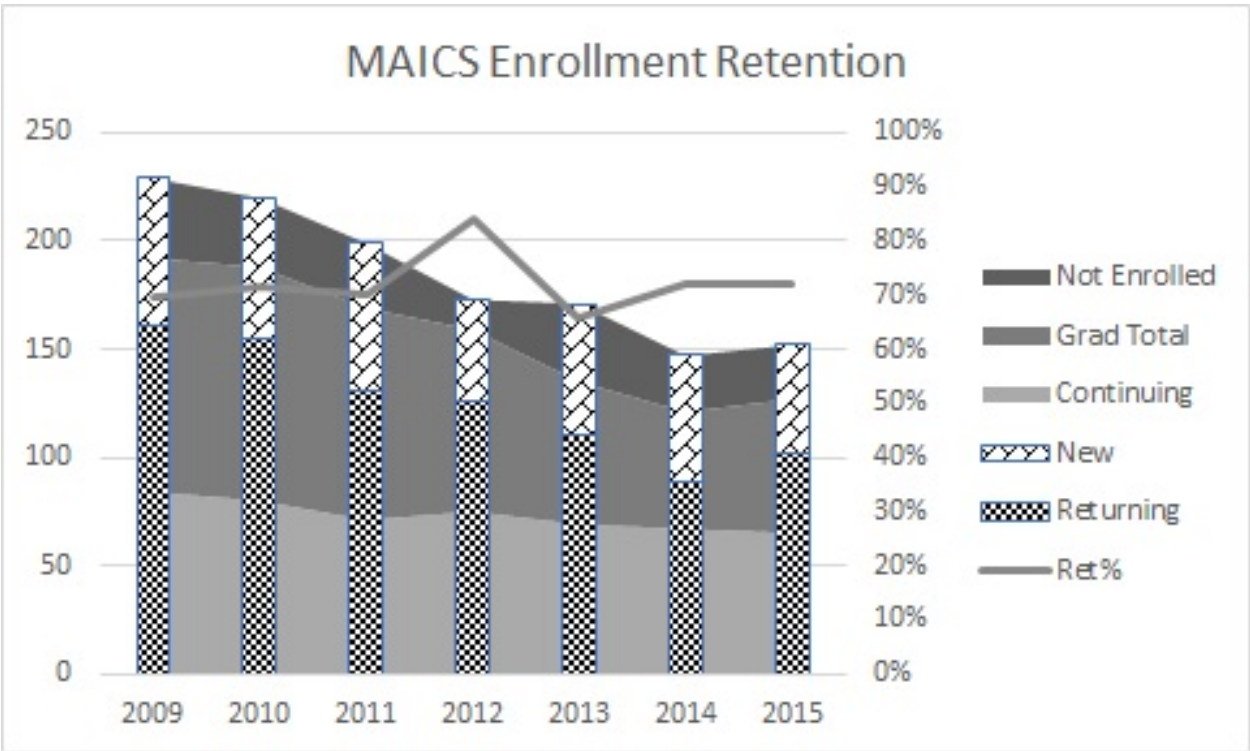


Doctor of Philosophy in Theology

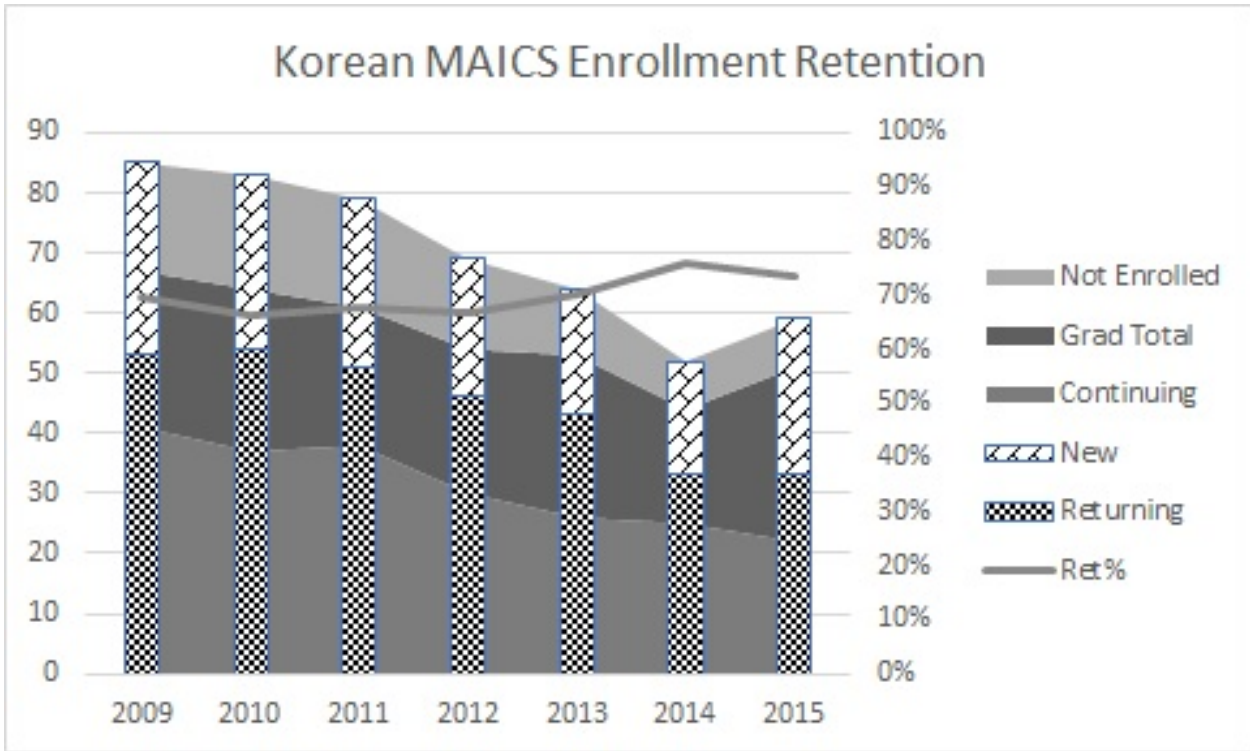




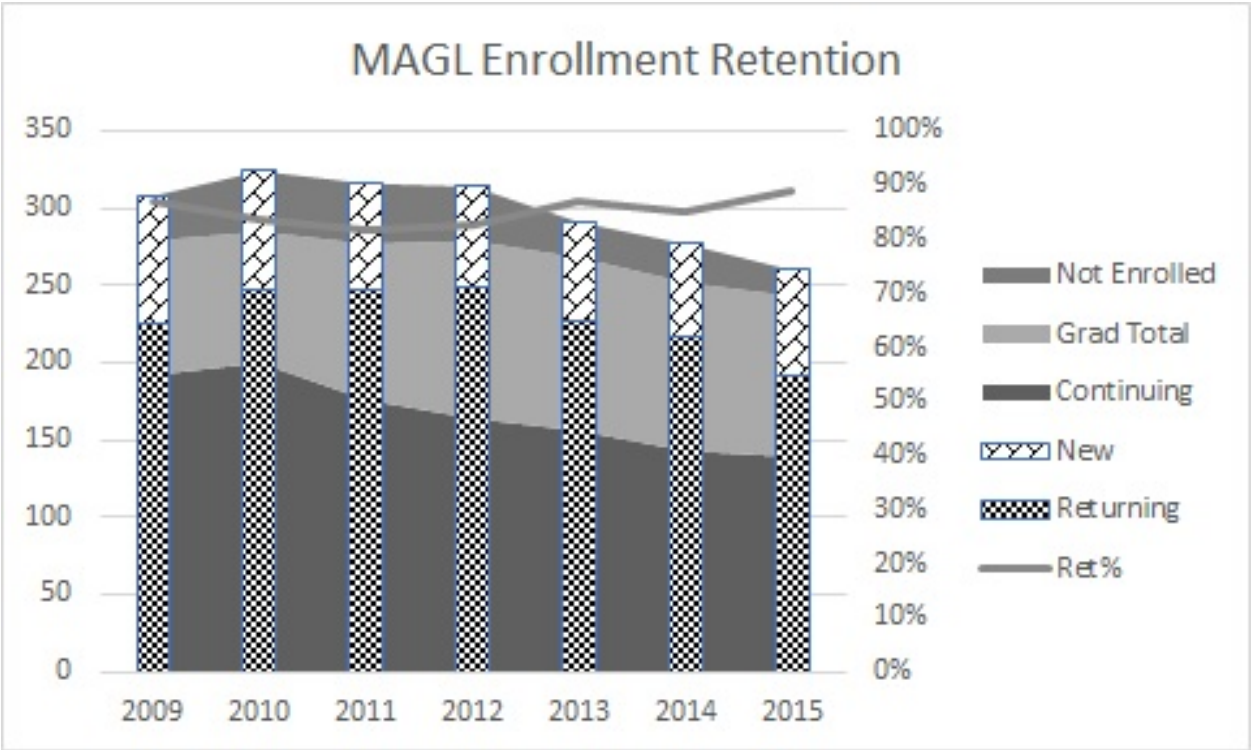
School of Intercultural Studies.....
Master of Arts in Intercultural Studies (English).....



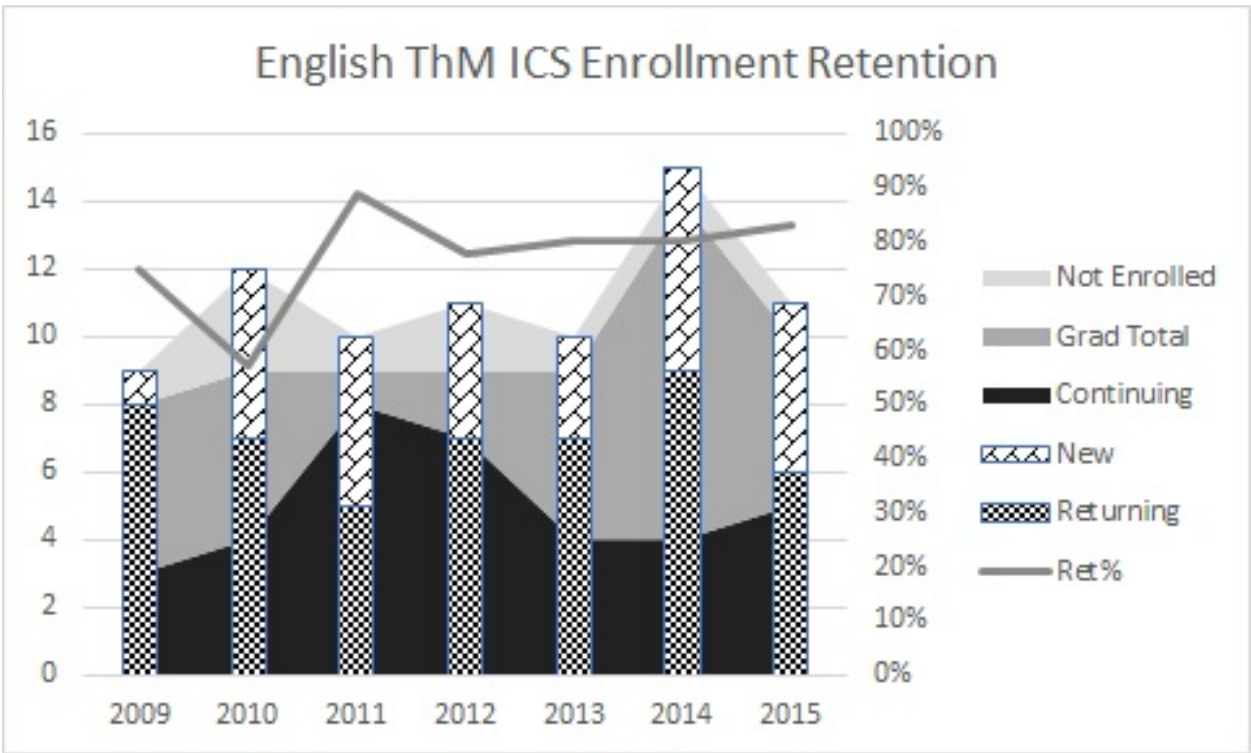
Master of Arts in Intercultural Studies (Korean)

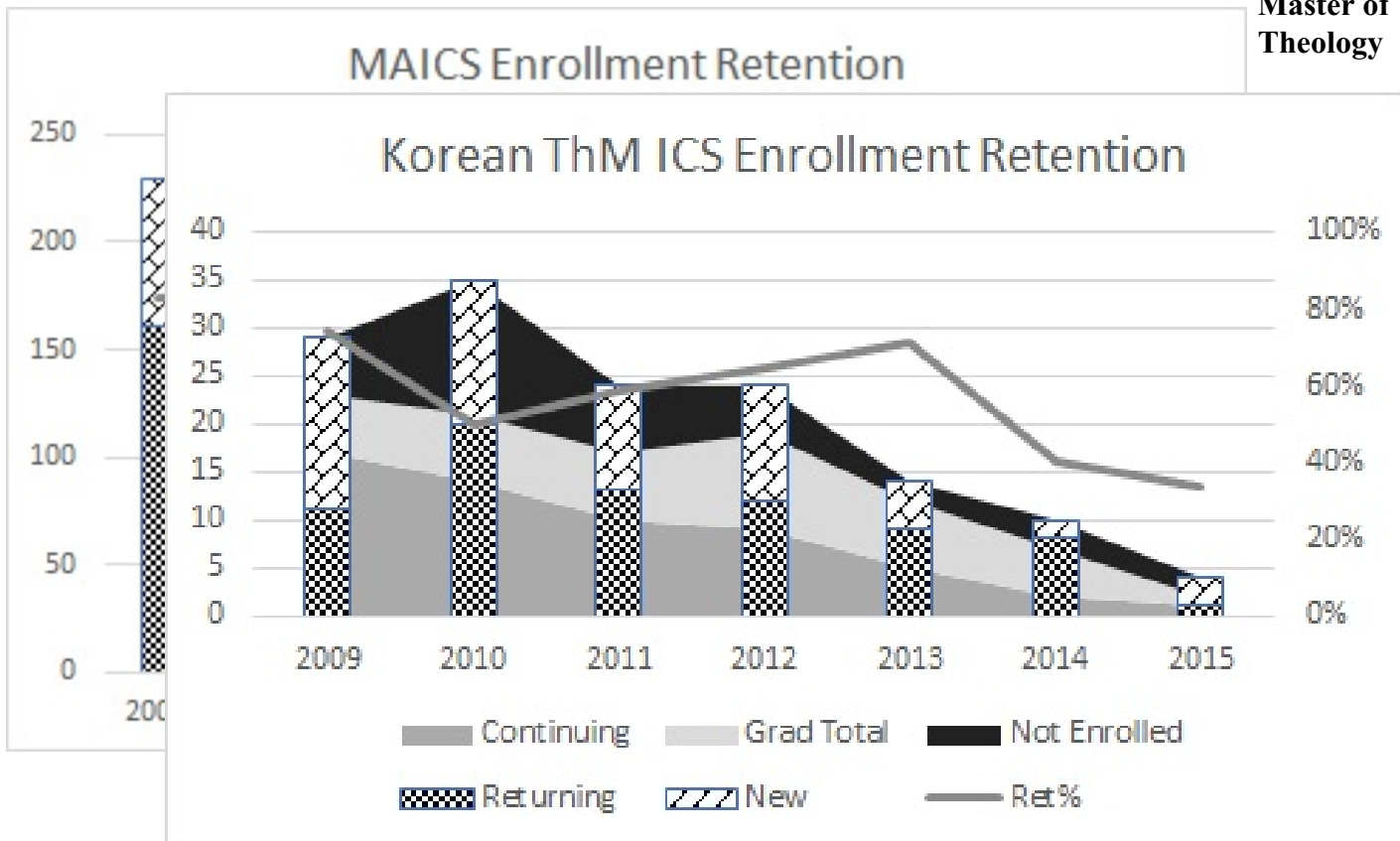


Master of Arts in Global Leadership (English).....

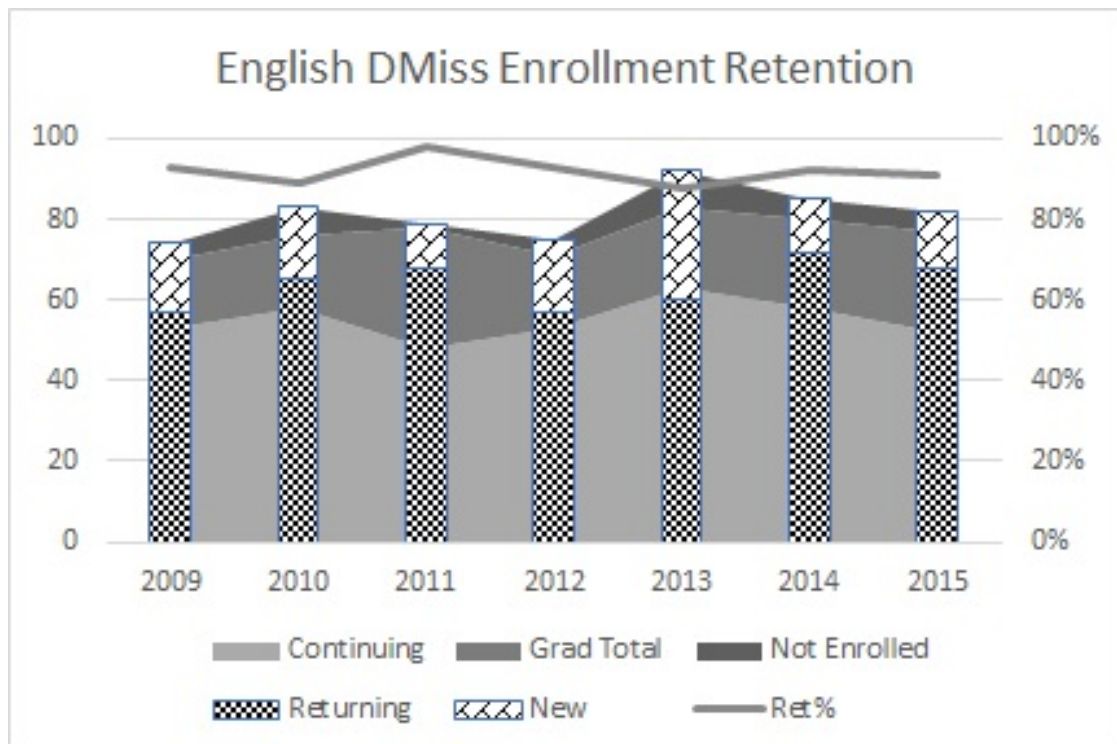


Master of Theology in Intercultural Studies (English).....



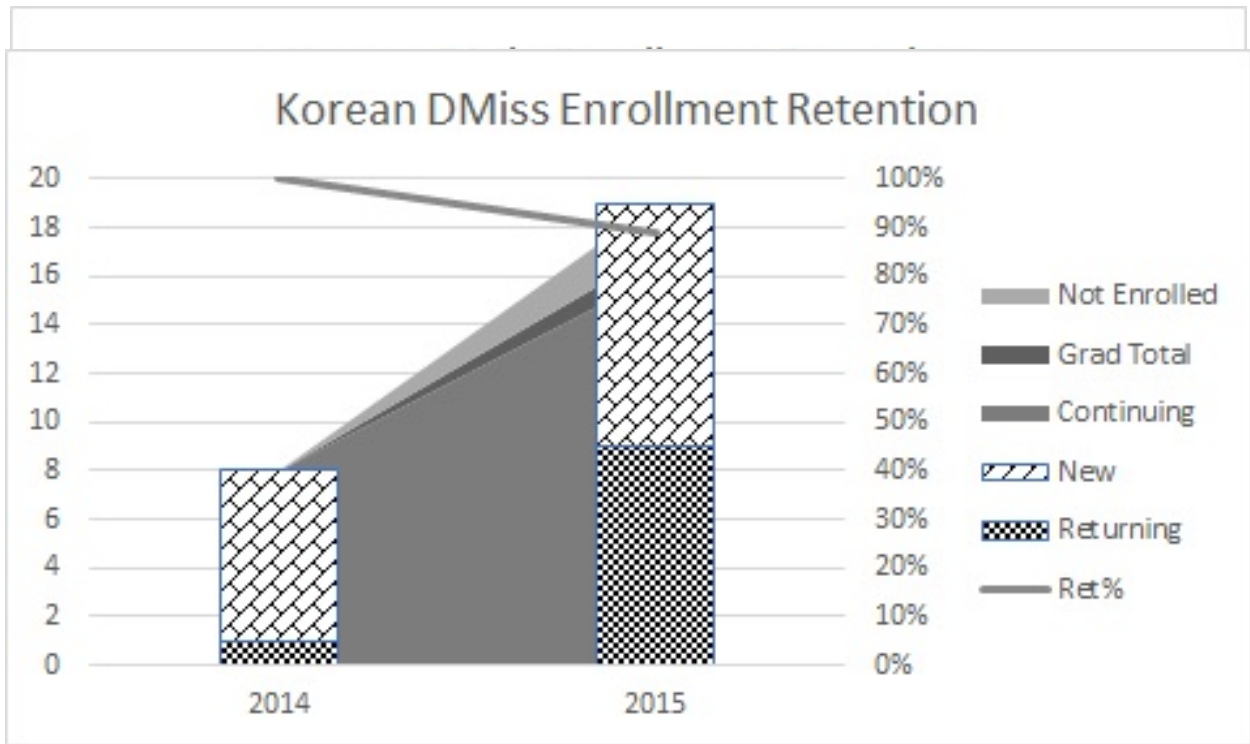
**Master of
Theology**

in Intercultural Studies (Korean)

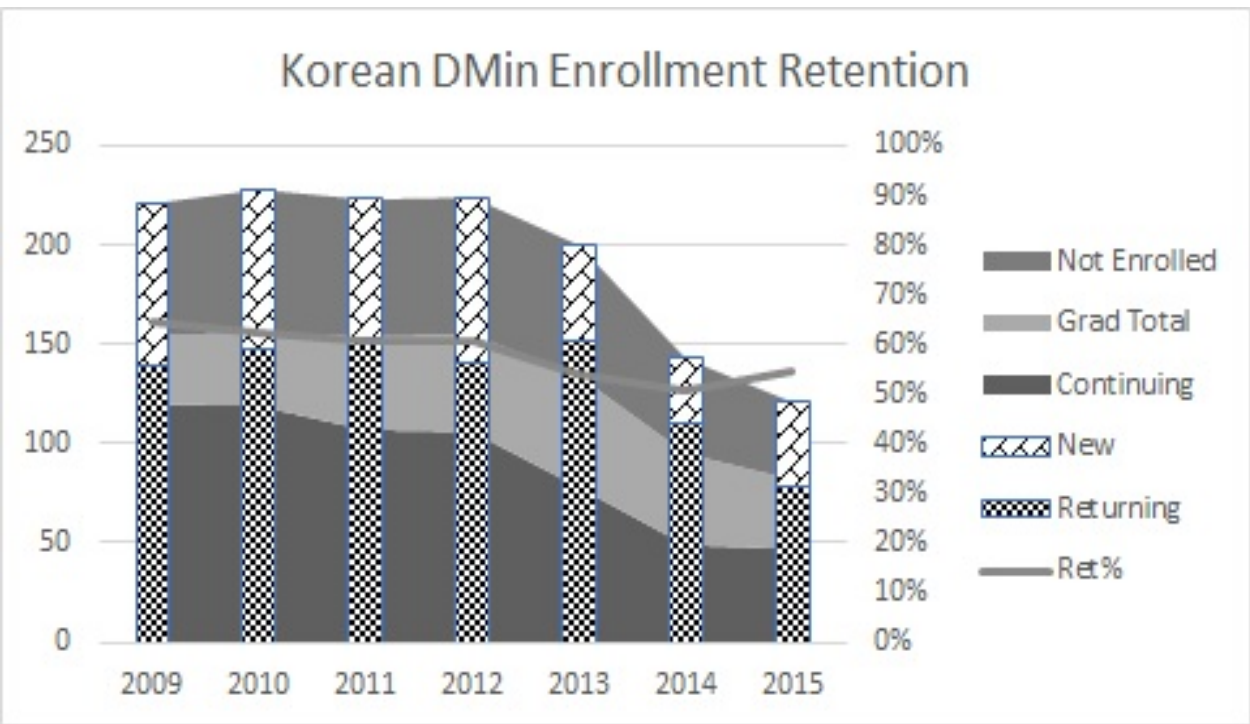


**Doctor
of
Missio
logy
(Engli
sh)**

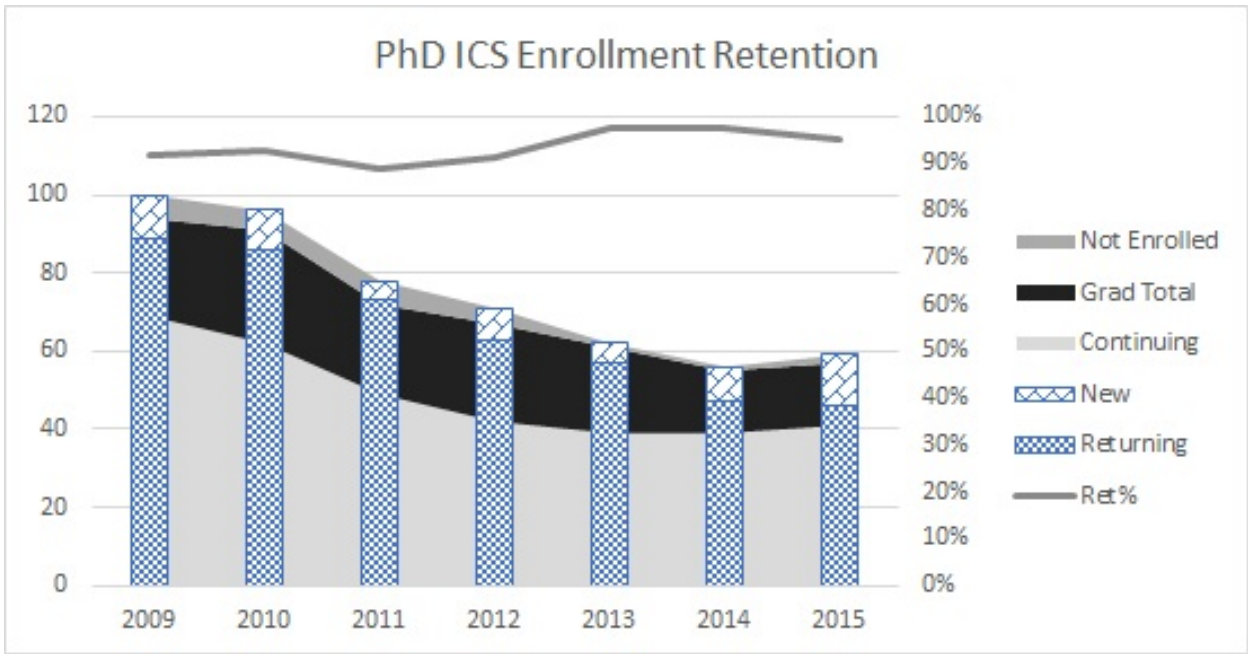
Doctor of Missiology (Korean)



Doctor of Ministry in Global Ministries (Korean)

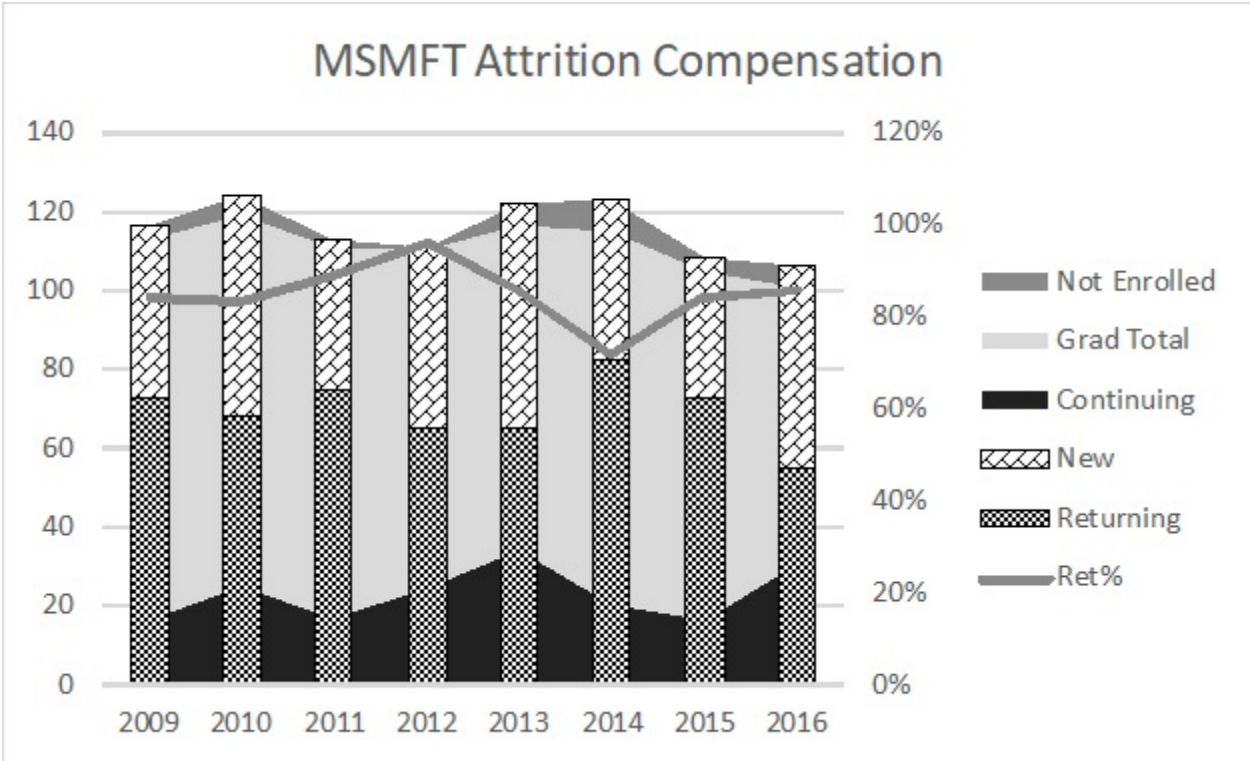


Doctor of Philosophy in Intercultural Studies (English)



School of Psychology

Master of Science in Marriage and Family Therapy



Doctor of Psychology

Time to Completion for all students entering the program

Outcome	Year in which Degrees were Conferred																					
	2007-2008		2008-2009		2009-2010		2010-2011		2011-2012		2012-2013		2013-2014		2014-2015		2015-2016		2016-2017		Total	
Total number of students with doctoral degree conferred on transcript	11		11		11		21		9		13		14		22		9		9		130	
Mean number of years to complete the program	5.5		7.3		5.6		6		6.4		6.4		5.8		6.5		6.7		6		6.22	
Median number of years to complete the program	5		6		5		6		6		6		6		6		5		6		6	
Time to Degree Ranges	N	%	N	%	N	%	N	%	N	%	N	%	N	%	N	%	N	%	N	%	N	%
Students in less than 5 years	0	0	1	9	0	0	0	0	0	0	1	8	0	0	0	0	0	0	0	0	2	2
Students in 5 years	7	64	1	9	7	64	9	43	1	11	2	15	5	36	10	45	5	56	4	44	51	39
Students in 6 years	3	27	4	36	2	18	6	29	5	56	6	46	7	50	3	14	3	33	3	33	42	32
Students in 7 years	0	0	2	18	1	9	4	19	1	11	1	8	2	14	3	14	0	0	1	11	15	12
Students in more than 7 years	1	9	3	27	1	9	2	10	2	22	3	23	0	0	6	27	1	11	1	11	20	15

Attrition

Variable	Year of First Enrollment																			
	2007-2008		2008-2009		2009-2010		2010-2011		2011-2012		2012-2013		2013-2014		2014-2015		2015-2016		2016-2017	
	N	%	N	%	N	%	N	%	N	%	N	%	N	%	N	%	N	%	N	%
Students for whom this is the year of first enrollment (i.e. new students)	16	-	29	-	18	-	24	-	20	-	13	-	17	-	11	-	10	-	7	-
Students whose doctoral degrees were conferred on their transcripts	10	63	14	48	12	67	17	71	9	45	5	38	0	0	0	0	0	0	0	0
Students still enrolled in program	0	0	1	3	1	6	0	0	3	15	3	23	14	82	9	82	10	100	7	100
Students no longer enrolled for any reason other than conferral of doctoral degree	6	38	14	48	5	28	7	29	8	40	5	38	3	18	2	18	0	0	0	0

For 2007-2008, the percentage of attrition excluding inter-program transfers is 6%. The 38% noted above includes 5 students who switched to the PhD program. The year of first enrollment includes 6 who transferred from the PhD program, for a cohort size of 11.

For 2008-2009, the percentage of attrition excluding inter-program transfers is 24%. The 48% noted above includes 7 students who switched to the PhD program. The year of first enrollment includes 5 who transferred from the PhD program, for a cohort size of 22.

For 2009-2010, the percentage of attrition excluding inter-program transfers is 11%. The 28% noted above includes 2 students who switched to the PhD program. The year of first enrollment includes 5 who transferred from the PhD program, for a cohort size of 16.

For 2010-2011, the percentage of attrition excluding inter-program transfers is 4%. The 29% noted above includes 6 students who switched to the PhD Program. The year of first enrollment includes 3 who transferred from the PhD program, for a cohort size of 18.

For 2011-2012, the percentage of attrition excluding inter-program transfers is 15%. The 40% noted above includes 5 students who switched to the PhD Program. The year of first enrollment includes 2 who transferred from the PhD program, for a cohort size of 15.

For 2012-2013, the percentage of attrition excluding inter-program transfers is 15%. The 38% noted above includes 3 students who switched to the PhD Program. The year of first enrollment includes 2 who transferred from the PhD program, for a cohort size of 10.

For 2013-2014, the percentage of attrition excluding inter-program transfers is 12%. The 18% noted above includes 1 student who switched to the PhD Program. The year of first enrollment includes 1 who transferred from the PhD program, for a cohort size of 16.

Doctor of Philosophy in Clinical Psychology

Time to Completion for all students entering the program

Outcome	Year in which Degrees were Conferred											
	2007-2008	2008-2009	2009-2010	2010-2011	2011-2012	2012-2013	2013-2014	2014-2015	2015-2016	2016-2017	Total	
Total number of students with doctoral degree conferred on transcript	28	16	12	24	18	23	19	20	26	17	203	
Mean number of years to complete the program	6.5	6.8	6.7	6.7	6.5	6.4	6.6	7.2	6.9	6.6	6.69	
Median number of years to complete the program	6	6	6	6.5	6	6	6	6	6	6	6	
Time to Degree Ranges	N	%	N	%	N	%	N	%	N	%	N	%
Students in less than 5 years	0	0	0	0	0	0	0	0	0	0	0	0
Students in 5 years	2	7	0	0	0	0	1	6	3	13	0	0
Students in 6 years	18	64	10	63	8	67	11	46	9	50	10	43
Students in 7 years	5	18	2	13	2	17	8	33	6	33	9	39
Students in more than 7 years	3	11	4	25	2	17	4	17	2	11	1	4

Attrition

Variable	Year of First Enrollment																			
	2007-2008		2008-2009		2009-2010		2010-2011		2011-2012		2012-2013		2013-2014		2014-2015		2015-2016		2016-2017	
	N	%	N	%	N	%	N	%	N	%	N	%	N	%	N	%	N	%	N	%
Students for whom this is the year of first enrollment (i.e. new students)	31	-	25	-	24	-	25	-	34	-	28	-	19	-	22	-	19	-	16	-
Students whose doctoral degrees were conferred on their transcripts	18	58	20	80	19	79	17	68	13	38	1	4	0	0	0	0	0	0	0	0
Students still enrolled in program	0	0	0	0	2	8	2	8	16	47	23	82	15	79	20	91	15	79	15	94
Students no longer enrolled for any reason other than conferral of doctoral degree	13	42	5	20	3	13	6	24	5	15	4	14	4	21	2	9	4	21	1	6

For 2007-2008, the percentage of attrition excluding inter-program transfers is 19%. The 42% noted above includes 7 students who switched to the PsyD program. The year of first enrollment included 2 who transferred from the PsyD program, for a cohort size of 24.

For 2008-2009, the percentage of attrition excluding inter-program transfers is 12%. The 20% noted above includes 2 students who switched to the PsyD program. The year of first enrollment included 6 who transferred from the PsyD program, for a cohort size of 23.

For 2009-2010, the percentage of attrition excluding inter-program transfers is 8%. The 13% noted above includes 1 student who switched to the PsyD program. The year of first enrollment includes 2 who transferred from the PsyD program, for a cohort size of 23.

For 2010-2011, the percentage of attrition excluding inter-program transfers is 12%. The 24% noted above includes 2 students who switched to the PsyD Program. The year of first enrollment includes 8 who transferred from the PsyD program, for a cohort size of 23.

For 2011-2012, the year of first enrollment includes 8 who transferred from the PsyD program.

For 2012-2013, the percent of attrition excluding inter-program transfers is 7%. The 14% noted above includes 1 student who switched to the non-clinical PhD program.

For 2013-2014, the percent of attrition excluding inter-program transfers is 16%. The 21% noted above includes 1 student who switched to the non-clinical PhD program. The year of first enrollment includes 1 who transferred from the PsyD program, for a cohort size of 18.

For 2014-2015, the year of first enrollment includes 2 who transferred from the PsyD program.

For 2015-2016, the percent of attrition excluding inter-program transfers is 16%. The 21% noted above includes 1 student who switched to the non-clinical PhD program.

For 2016-2017, the year of first enrollment includes 1 who transferred from the PsyD program.